

Classwork 5

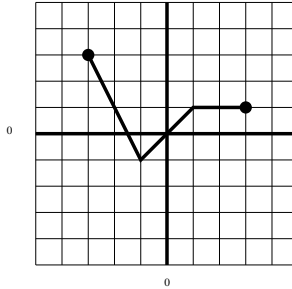
College Algebra and Trigonometry, MTH 123, Section 3260, Fall 2011

Instructor: Abhijit Champanerkar

Sept 21st 2011

Name: _____

1. The graph of $y = f(x)$ is as shown.



Sketch the graphs of the following functions:

(1) $y = f(x) - 2$

(2) $y = f(x + 2)$

(3) $y = -f(x)$

(4) $y = 2f(x)$

