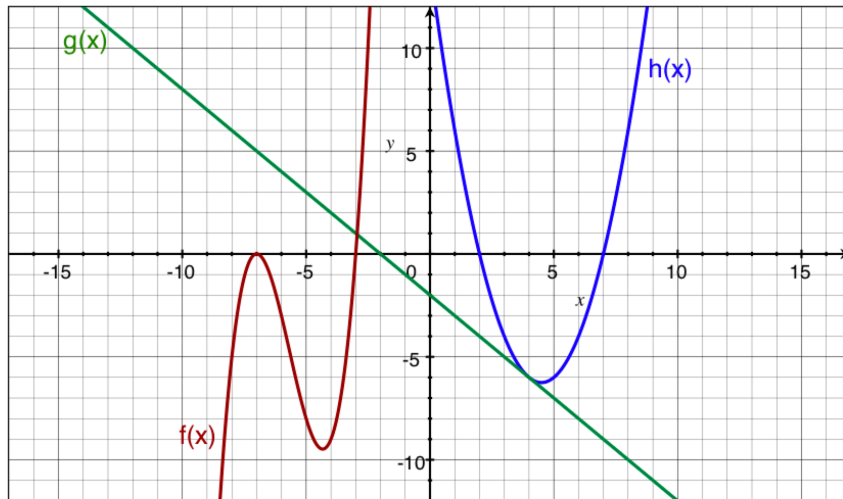


## Math 123 Quiz 1B

October 25, 2010

Professor Ilya Kofman

NAME: \_\_\_\_\_



1. Evaluate each expression using the graph above.
 

<p>(a) <math>(g + h)(3) =</math> _____</p> <p>(b) <math>(gh)(2) =</math> _____</p> <p>(c) <math>(g \circ h)(2) =</math> _____</p> <p>(d) <math>(f \circ h \circ g)(-8) =</math> _____</p>	<p>(f) Does <math>f(x)</math> have an inverse for all <math>x</math>?   <b>Y</b>   <b>N</b></p> <p>(g) Does <math>g(x)</math> have an inverse for all <math>x</math>?   <b>Y</b>   <b>N</b></p> <p>(h) Does <math>h(x)</math> have an inverse for all <math>x</math>?   <b>Y</b>   <b>N</b></p>
---	---
  
2. Find the inverse of  $f(x) = (x + 3)^5$ .       $f^{-1}(x) =$  \_\_\_\_\_

3. Find the area of the largest rectangle that can be inscribed between the axes and  $y = 5 - 3x$ .      Area = \_\_\_\_\_